



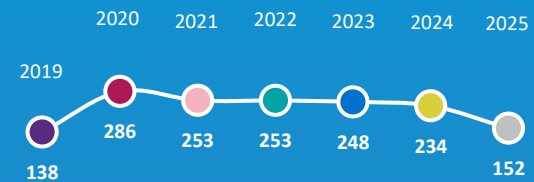
2025 Medical Training Survey

The Royal College of Pathologists of Australasia

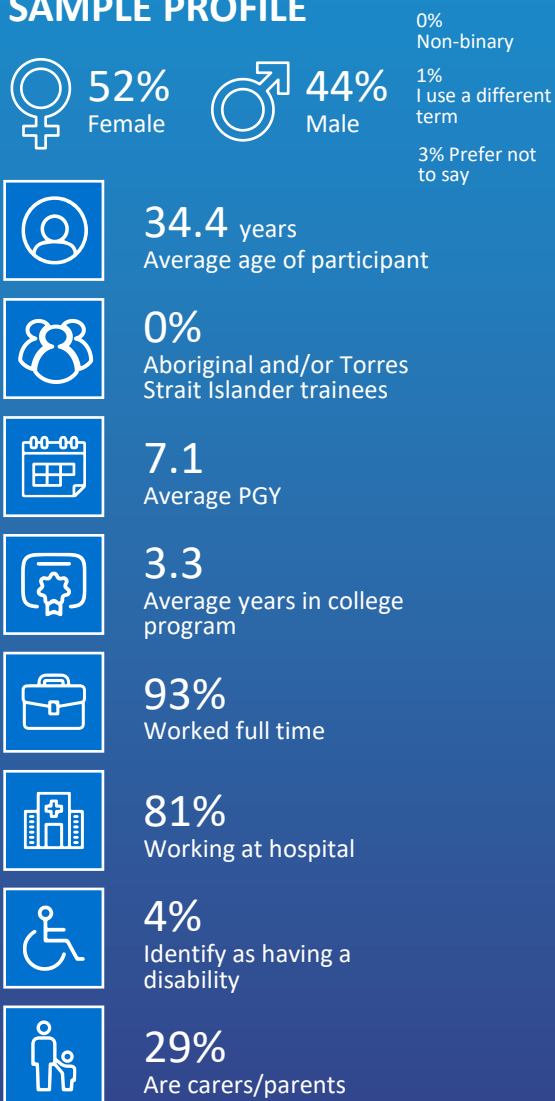
INTRODUCTION

The Medical Board of Australia's Medical Training Survey (MTS) is a national, profession-wide survey of doctors in training in Australia. This infographic is for the Royal College of Pathologists of Australasia for which 152 trainees responded to the survey. It is confidential and generates data used to strengthen medical training in Australia. The MTS is conducted annually with doctors in training, with 2025 being the seventh year.

NUMBER OF RCPA TRAINEES WHO PARTICIPATED

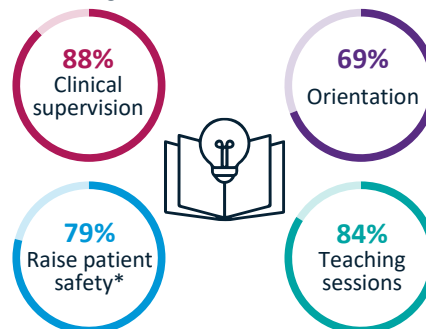


SAMPLE PROFILE



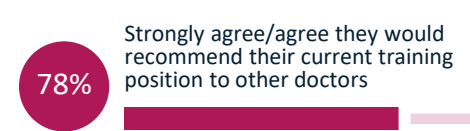
QUALITY OF TRAINING

% excellent/good



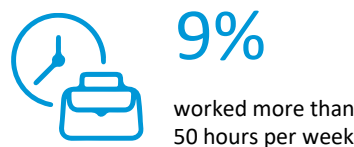
*Excludes those who reported that they did not receive this training

RECOMMEND TRAINING



70% OF TRAINEES
HAVE RECEIVED TRAINING ON HOW TO PROVIDE CULTURALLY SAFE CARE

36% OF TRAINEES
HAD A HEAVY / VERY HEAVY WORKLOAD IN SETTING

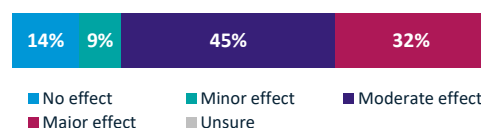


14% OF TRAINEES
HAD ACCESSED FLEXIBLE WORK ARRANGEMENTS



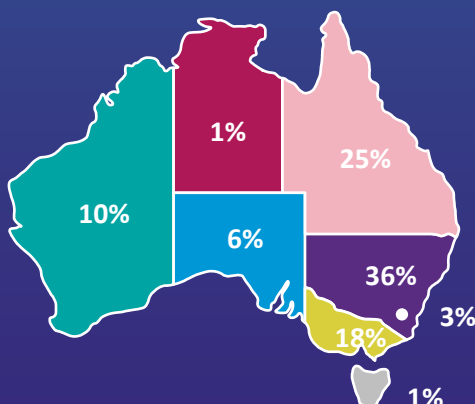
3 IN 10 TRAINEES
EXPERIENCED AND/OR WITNESSED BULLYING, HARASSMENT, SEXUAL HARASSMENT, DISCRIMINATION AND/OR RACISM

EFFECT OF EXPERIENCING BULLYING, HARASSMENT, SEXUAL HARASSMENT, DISCRIMINATION AND/OR RACISM ON MEDICAL TRAINING



ASSESSMENT

% total strongly agree/agree



The above map shows the current term/rotation or placement % by state.

Visit MedicalTrainingSurvey.gov.au and use the interactive data dashboard to create your own tailored reports using MTS data from 2019 to 2025.

© Copyright Ahpra on behalf of the Medical Board of Australia

▲ ▼ Significant difference between the results of 2024 and 2025